

600 x 1200 mm
BOOKMATCH
GVT/PGVT

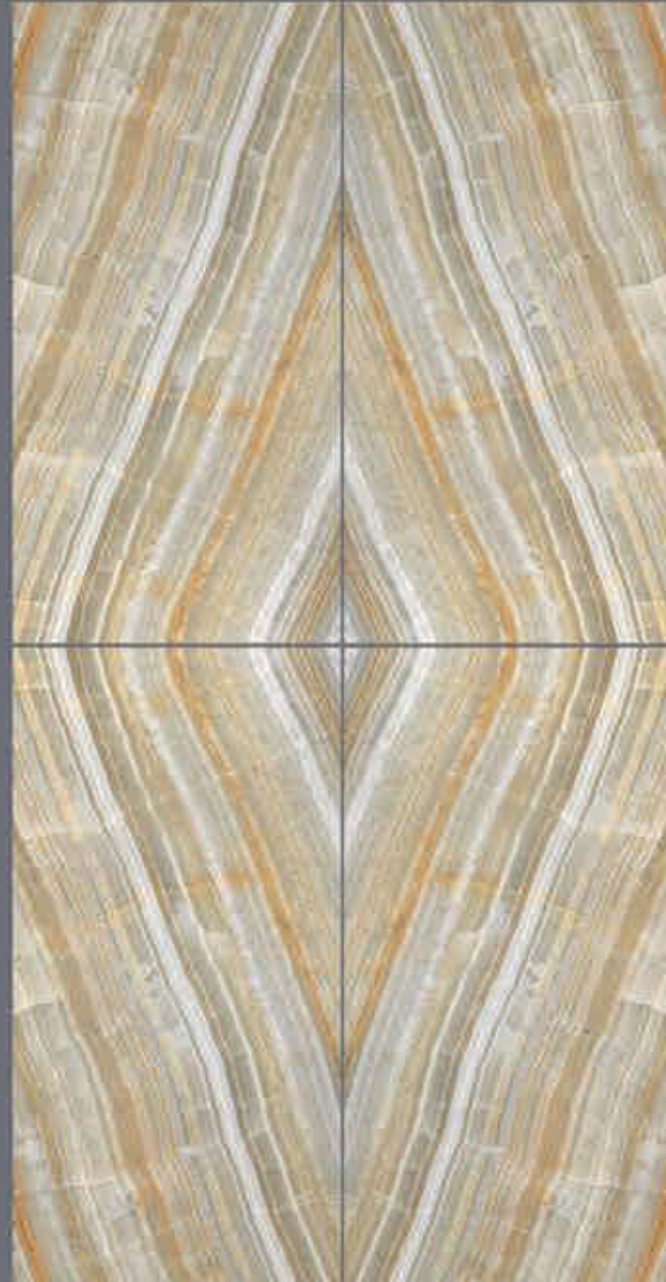
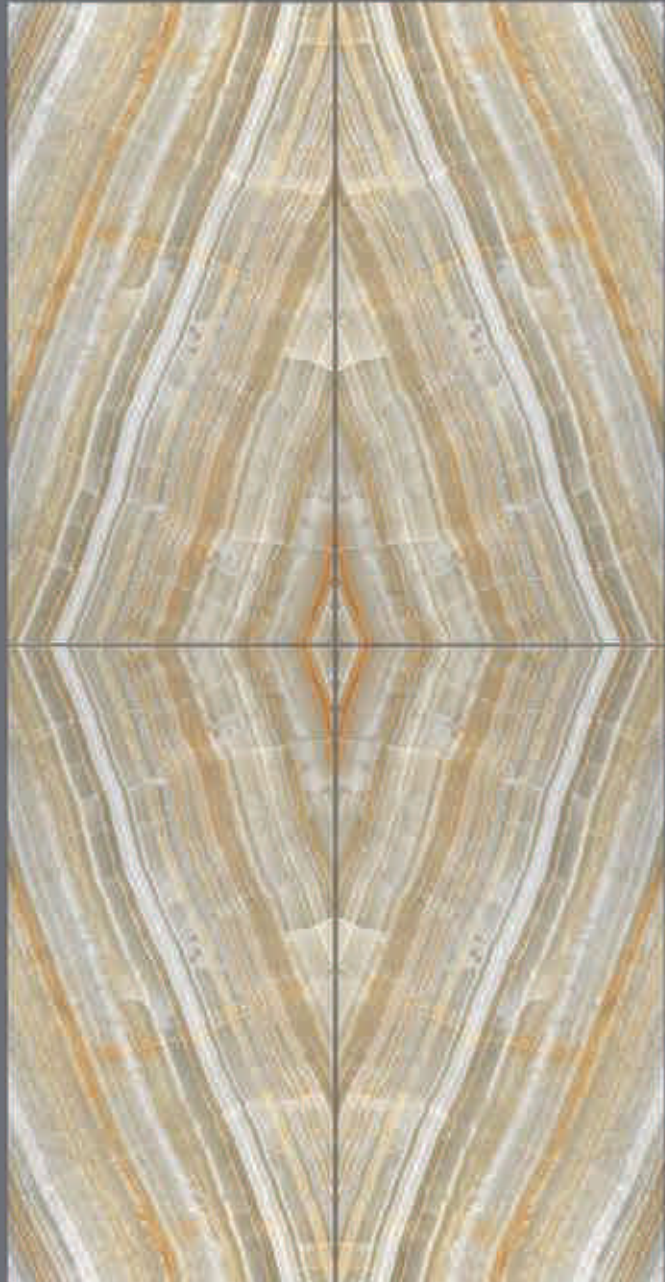




LIO 103 A



LIO 103 B



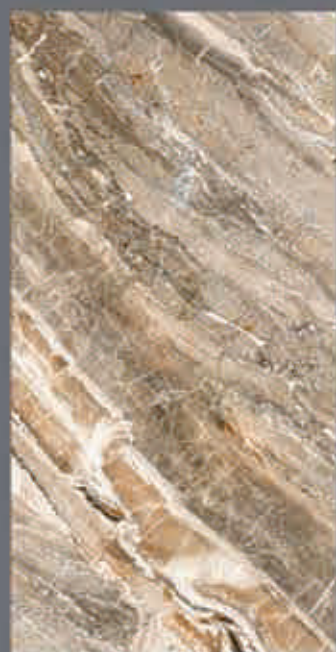


LIO 105 A

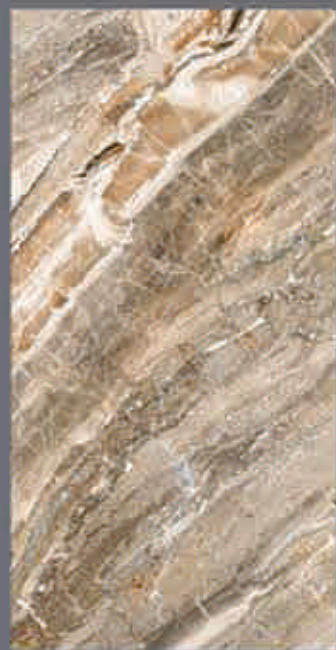


LIO 105 B





LIO 107 A

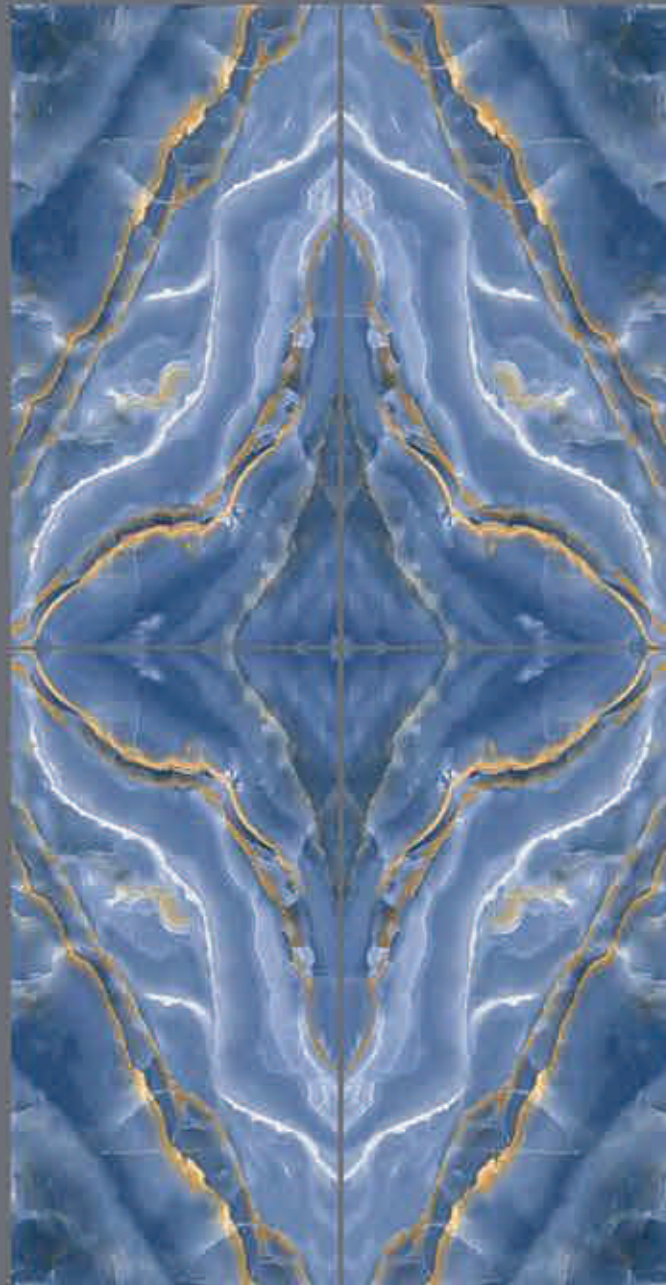
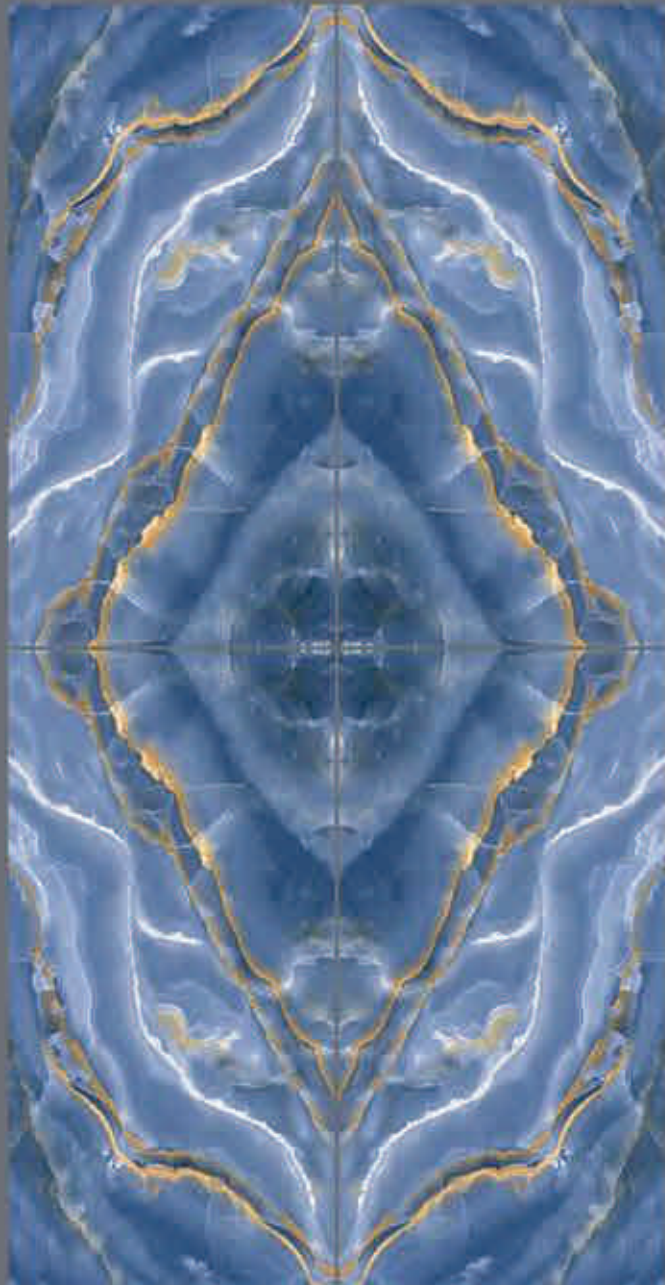


LIO 107 B





LIO 108 A



LIO 108 B



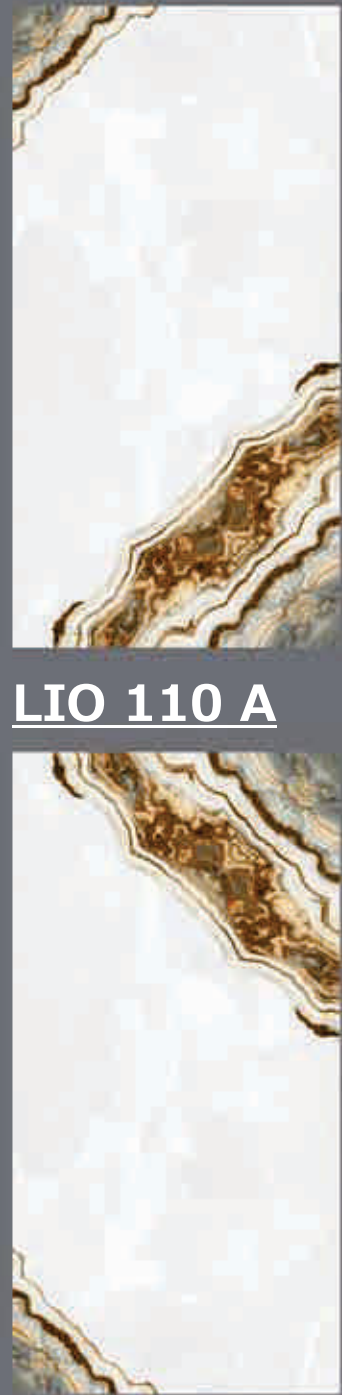


LIO 109 A



LIO 109 B

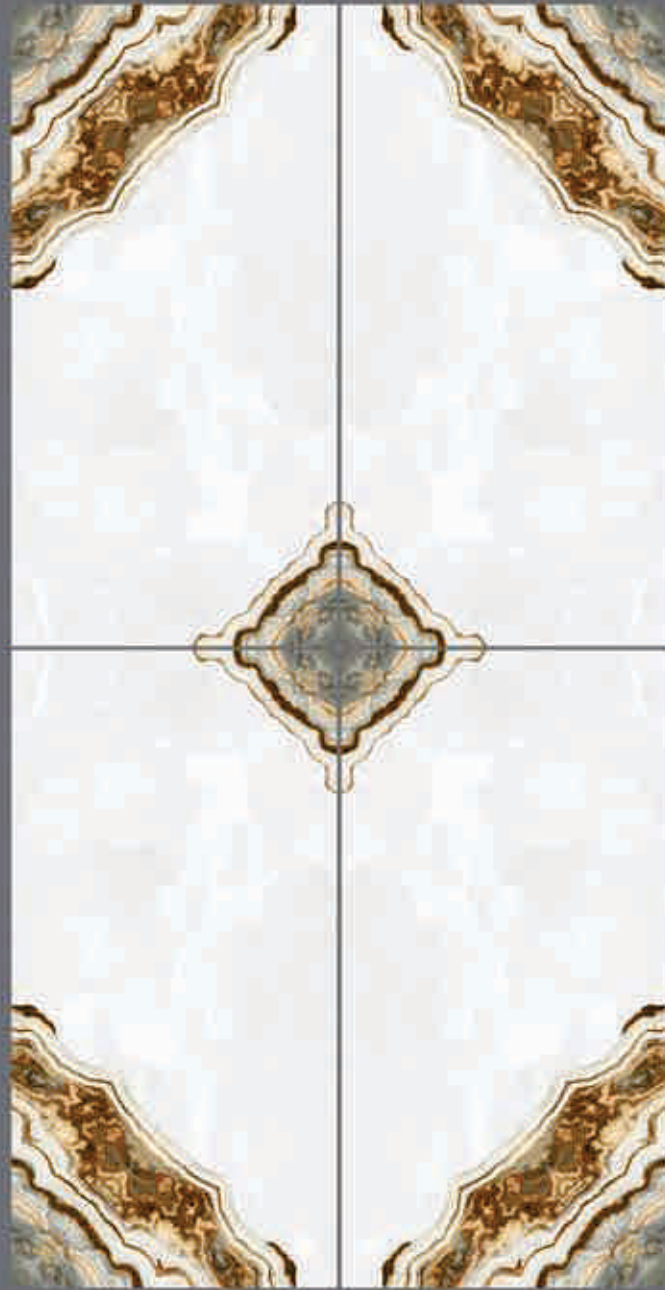




LIO 110 A

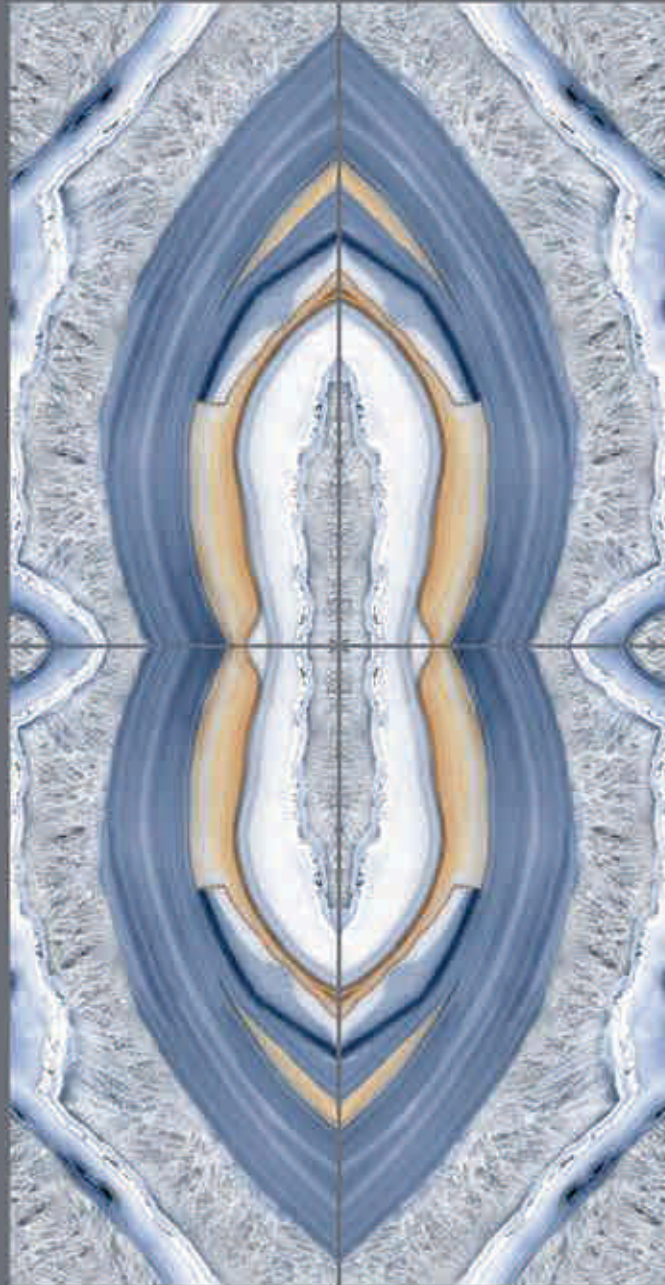


LIO 110 B





LIO 111 A



LIO 111 B

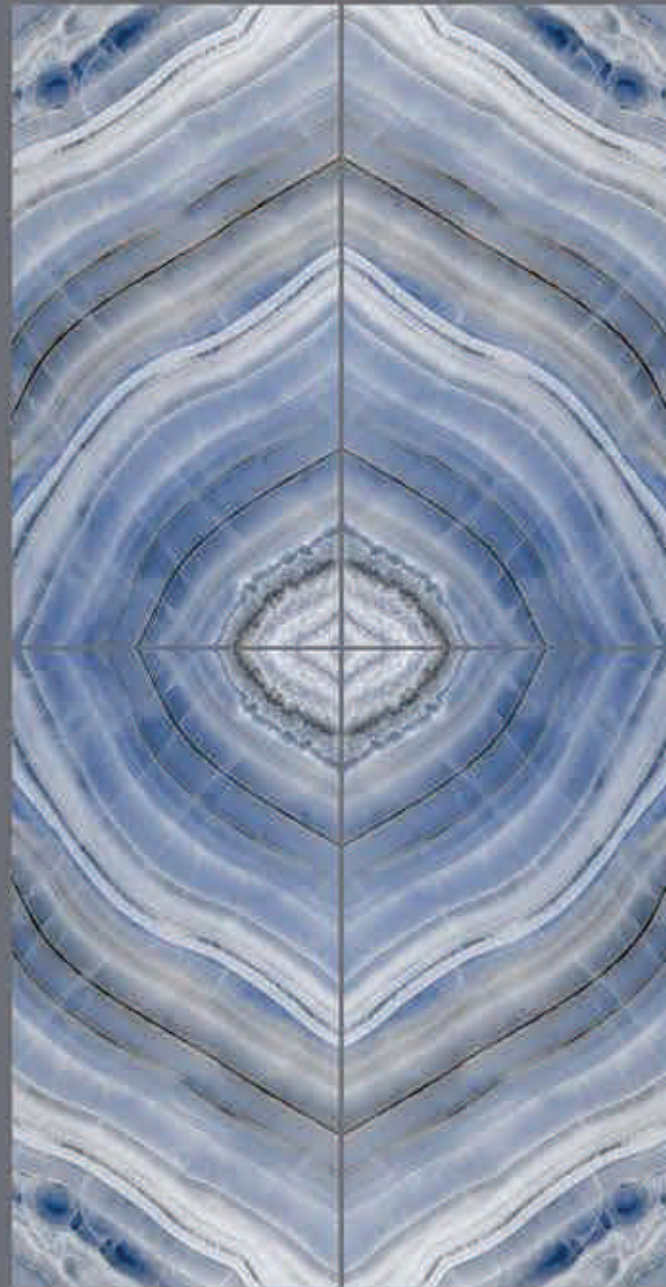
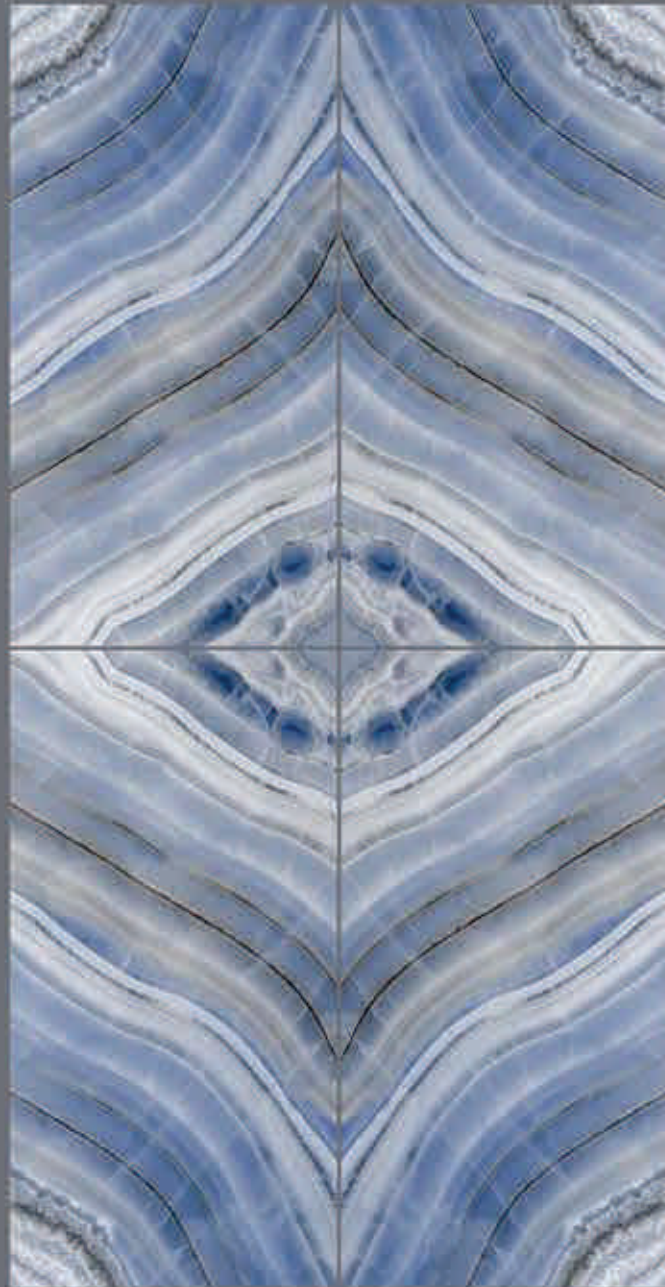




LIO 112 A



LIO 112 B

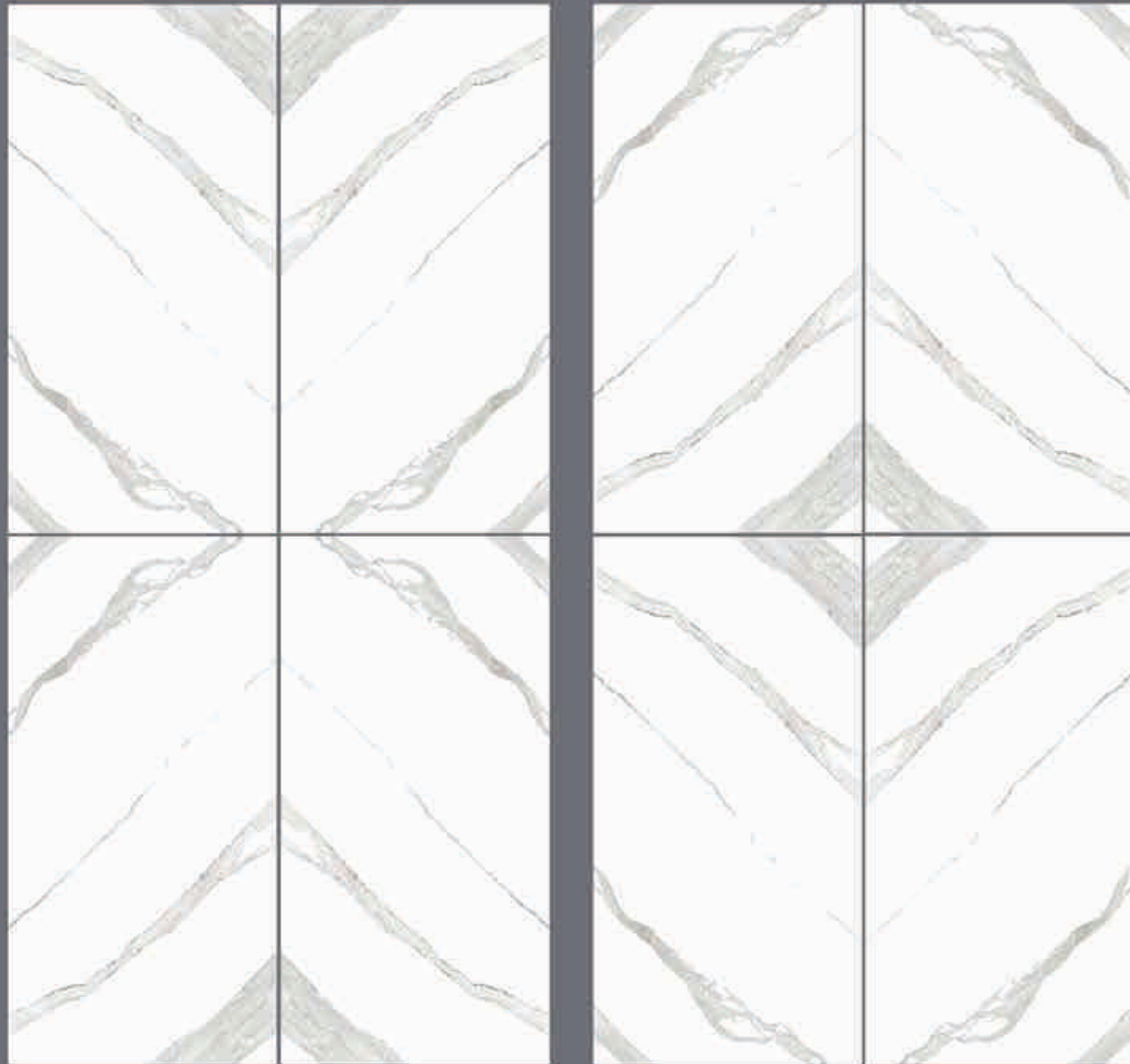




LIO 113 A



LIO 113 B

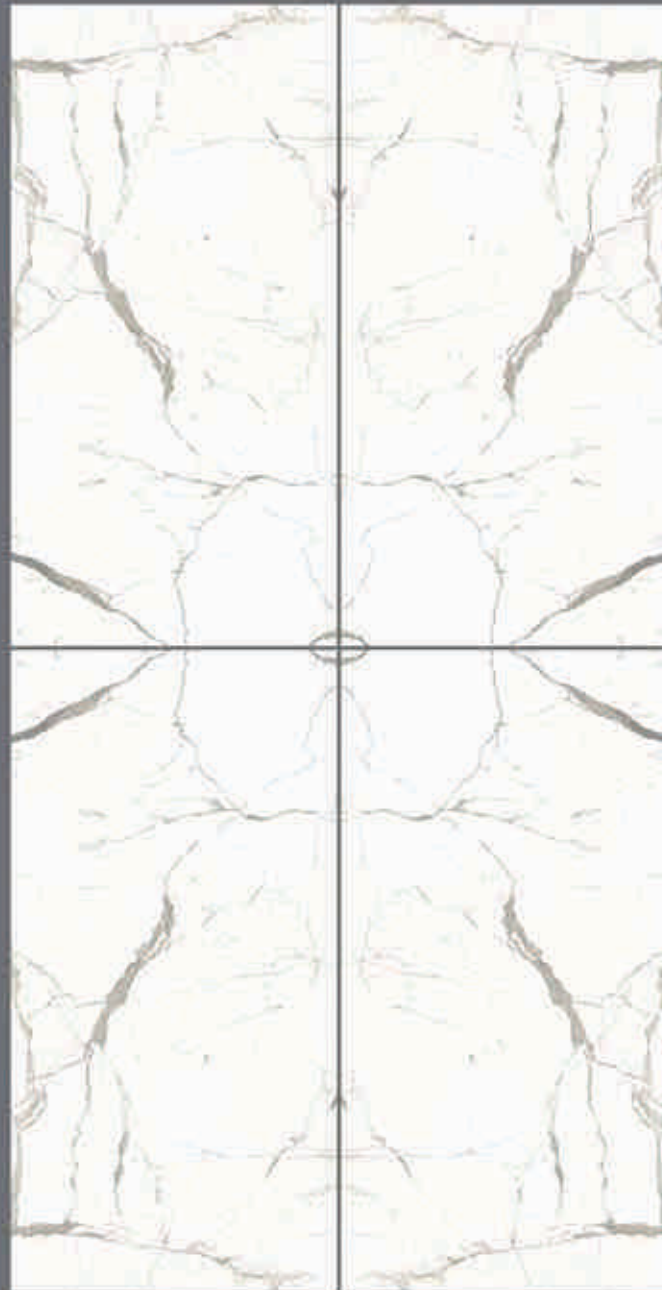


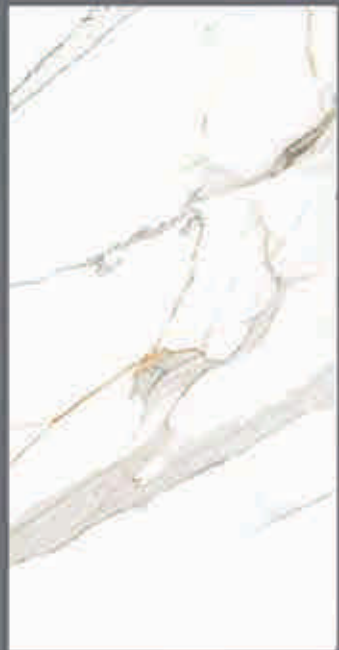


LIO 115 A

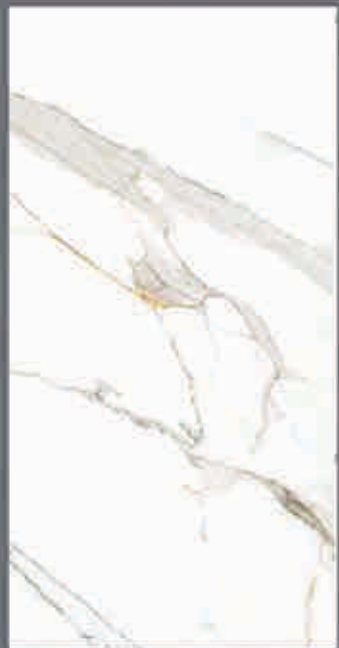


LIO 115 B

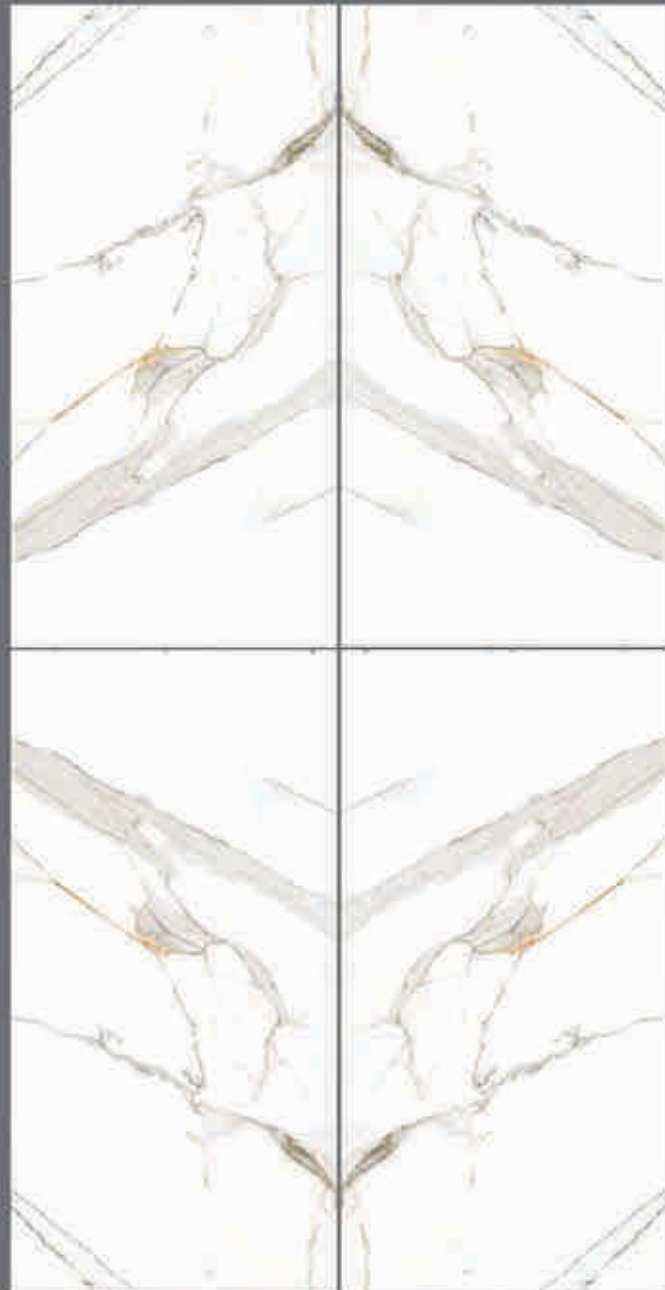
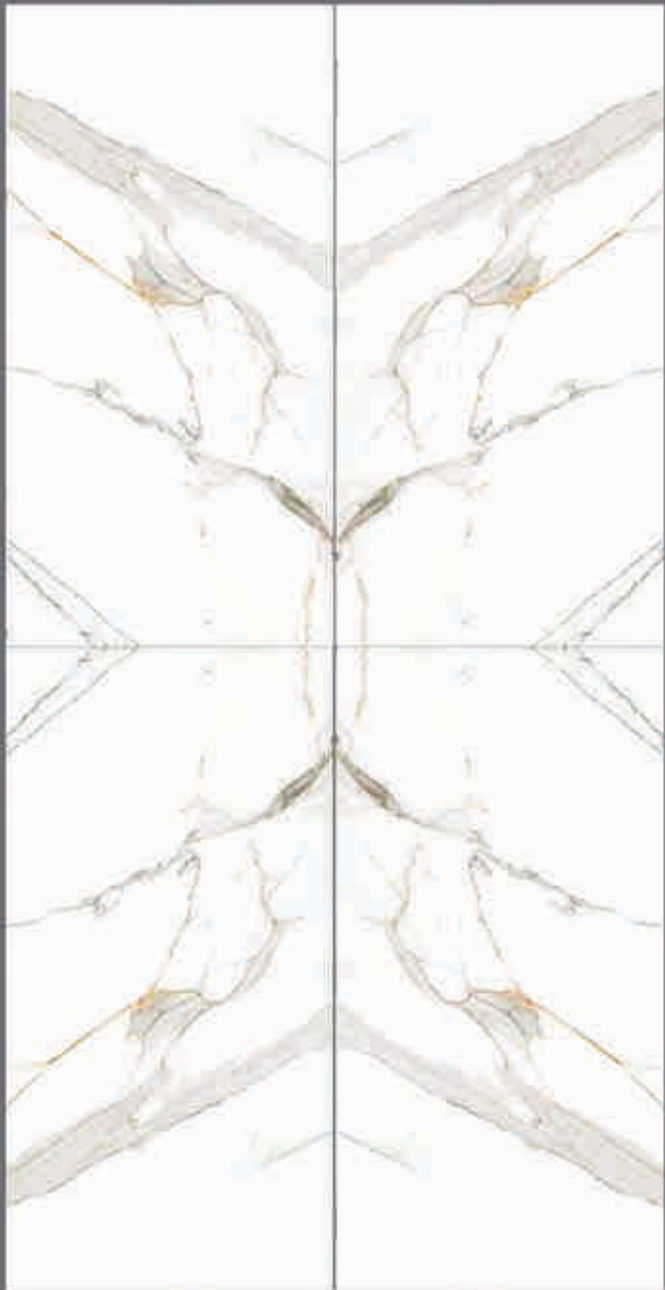


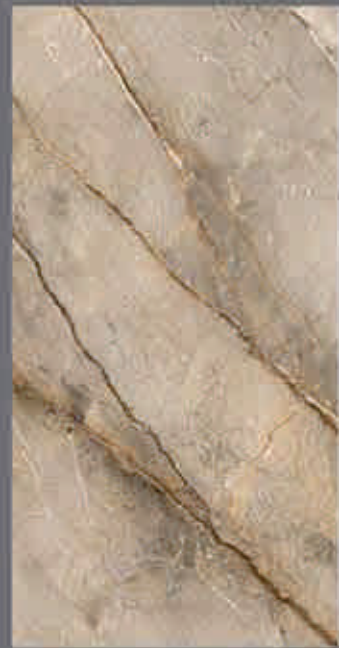


LIO 116 A



LIO 116 B





LIO 117 A

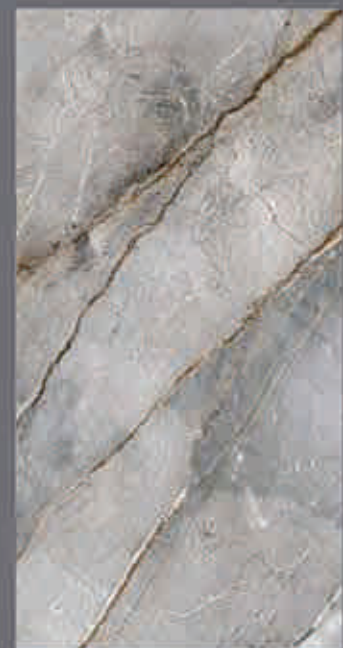


LIO 117 B





LIO 118 A



LIO 118 B





PRESTIGE COPPER A



PRESTIGE COPPER B





HG 002 B



This Space

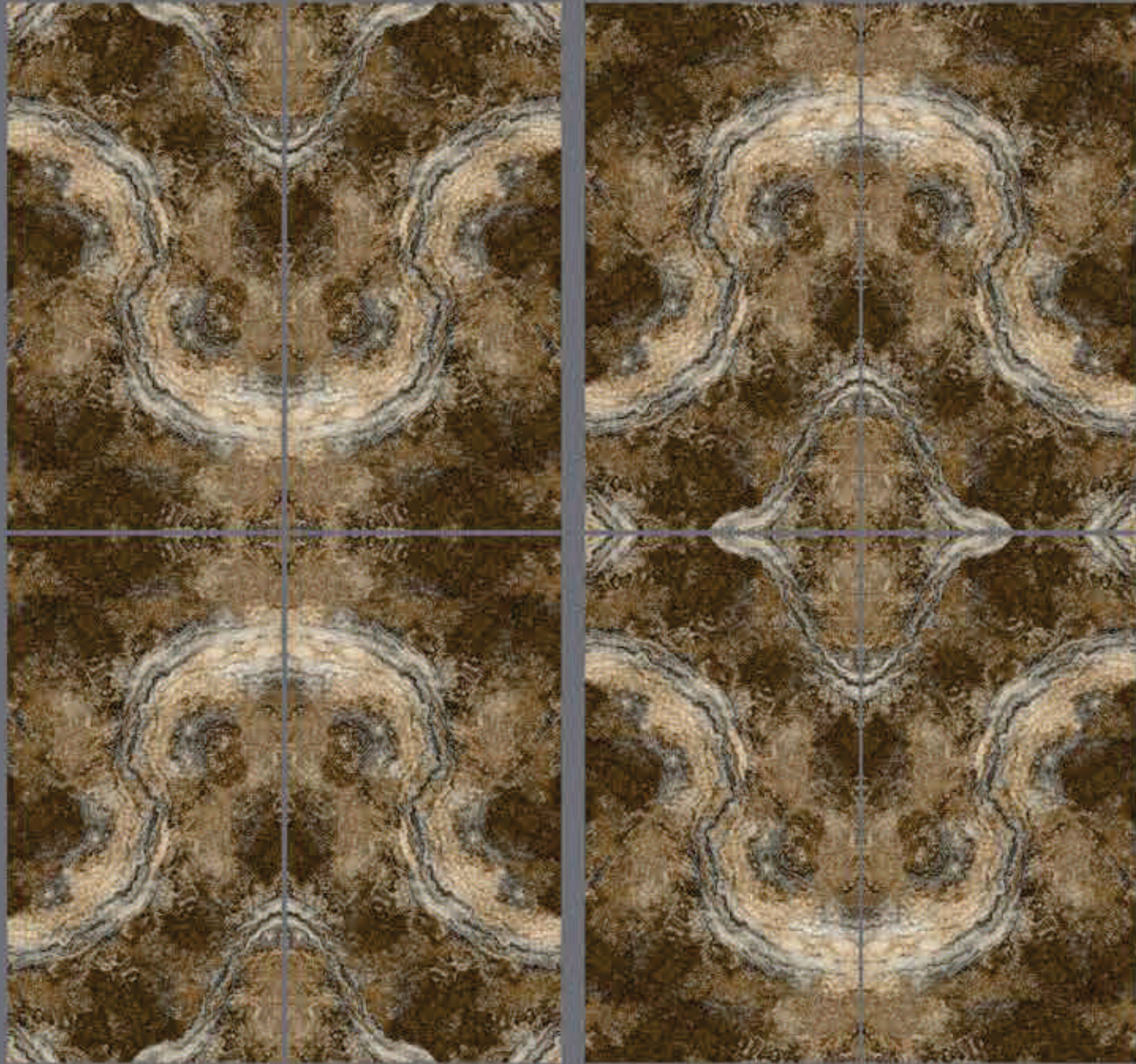


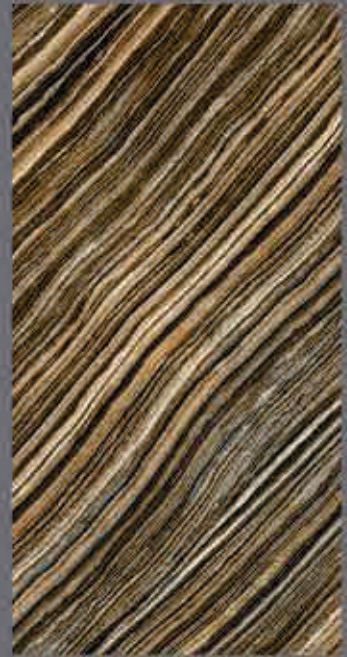


HG 003 A

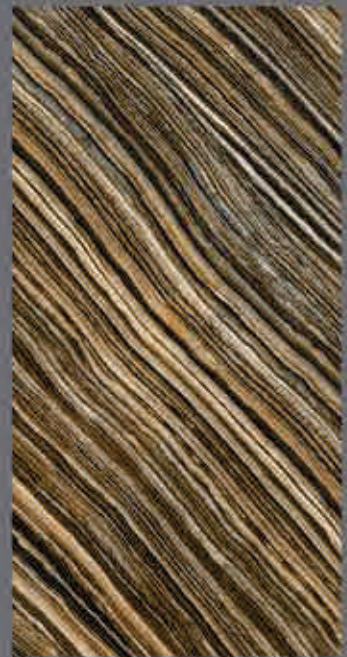


This Space





HG 004 B



This Space

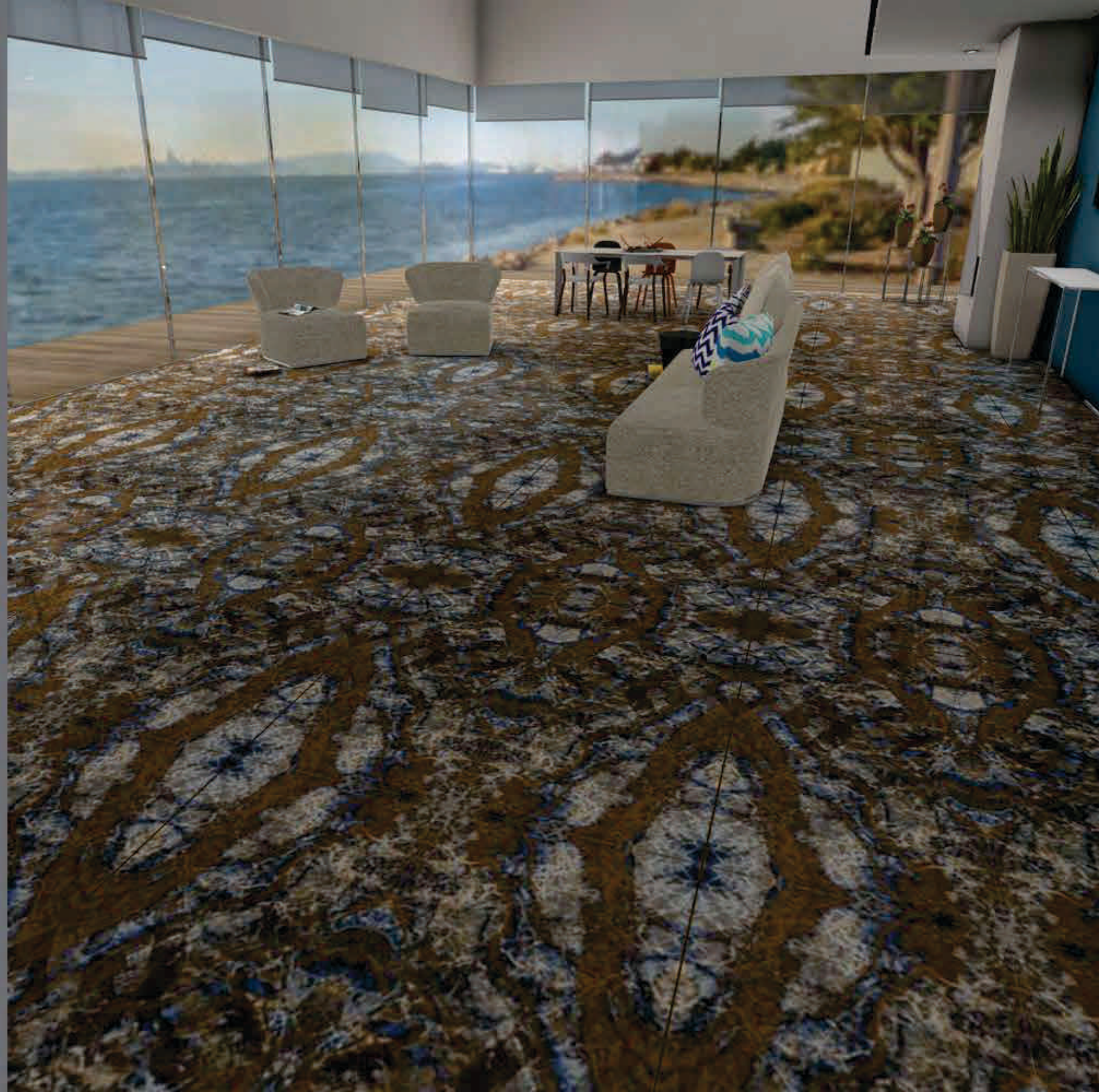


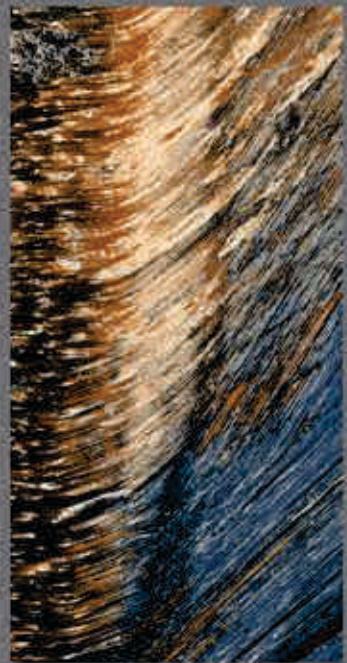


HG 005 A

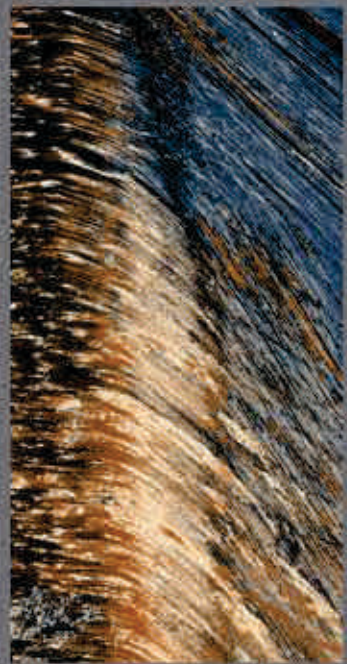


HG 005 B

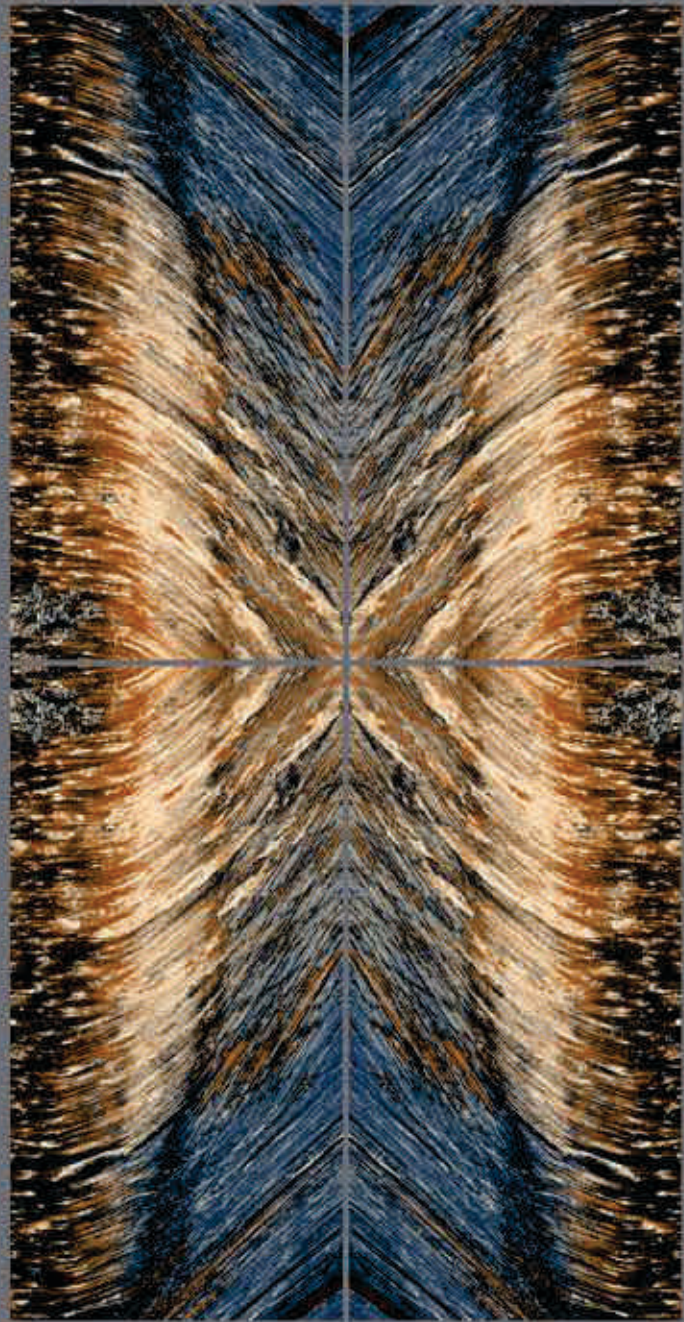




HG 006 B



This Space



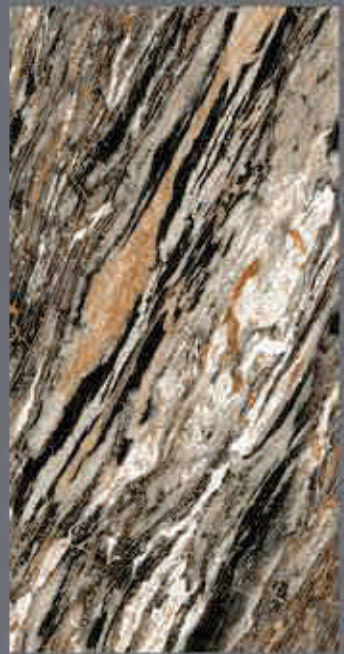


HG 007 A



HG 007 B



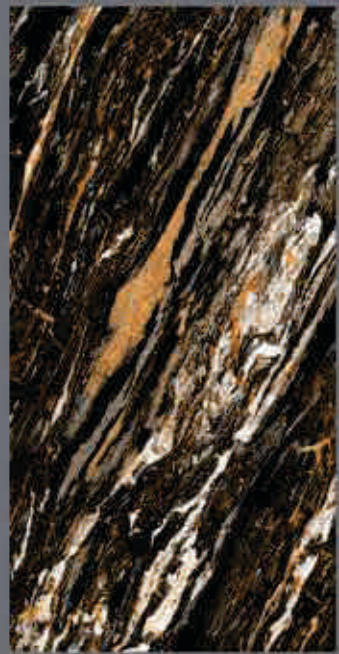


HG 008 B

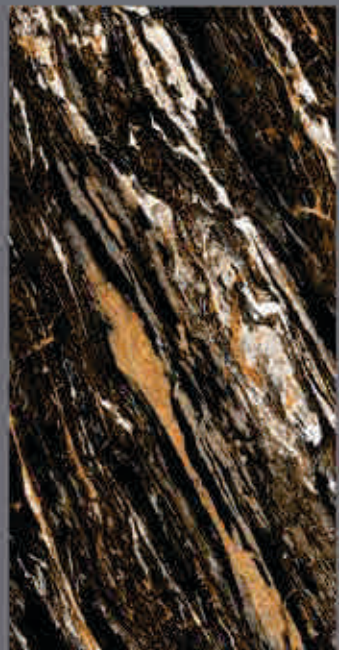


This Space

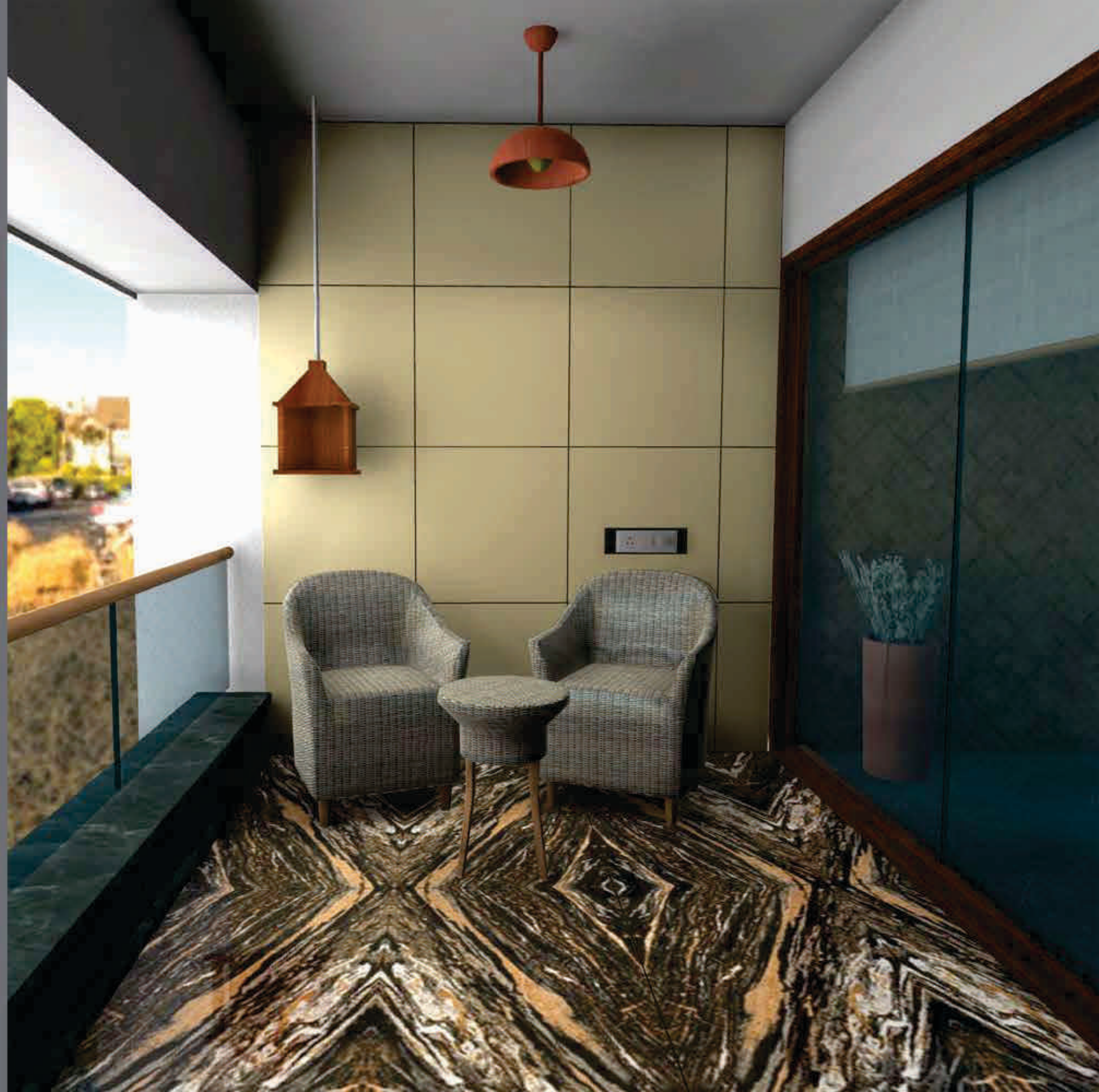




HG 009 A



HG 009 B





:: EUPHORIA HEAD QUARTER ::

14, 15, 16, 17 ISHAN CERAMIC ZONE
8 A NATIONAL HIGH WAY
MORBI - INDIA 363642

:: MANUFACTURING UNIT ::

PIPLI ROAD
MORBI - INDIA 363642.

 **+91 92378 00007**

 **+91 97 12 11 77 99**

 **info@euphoriaceramica.com** (DOMESTIC AFFAIRS)

 **export@euphoriaceramica.com** (EXPORT AFFAIRS)